



# STEINERT EDDY C MOVE

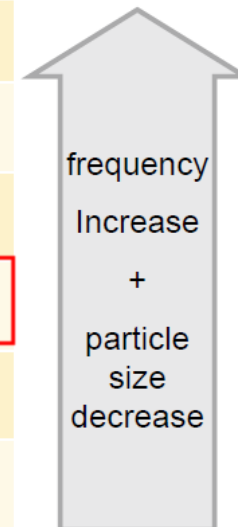
16.02.2024

# EDDY C MOVE ECS SPECIFICATION

- NES 200 220 5009
- 9 pole pairs
- Can process material from 5mm grain size

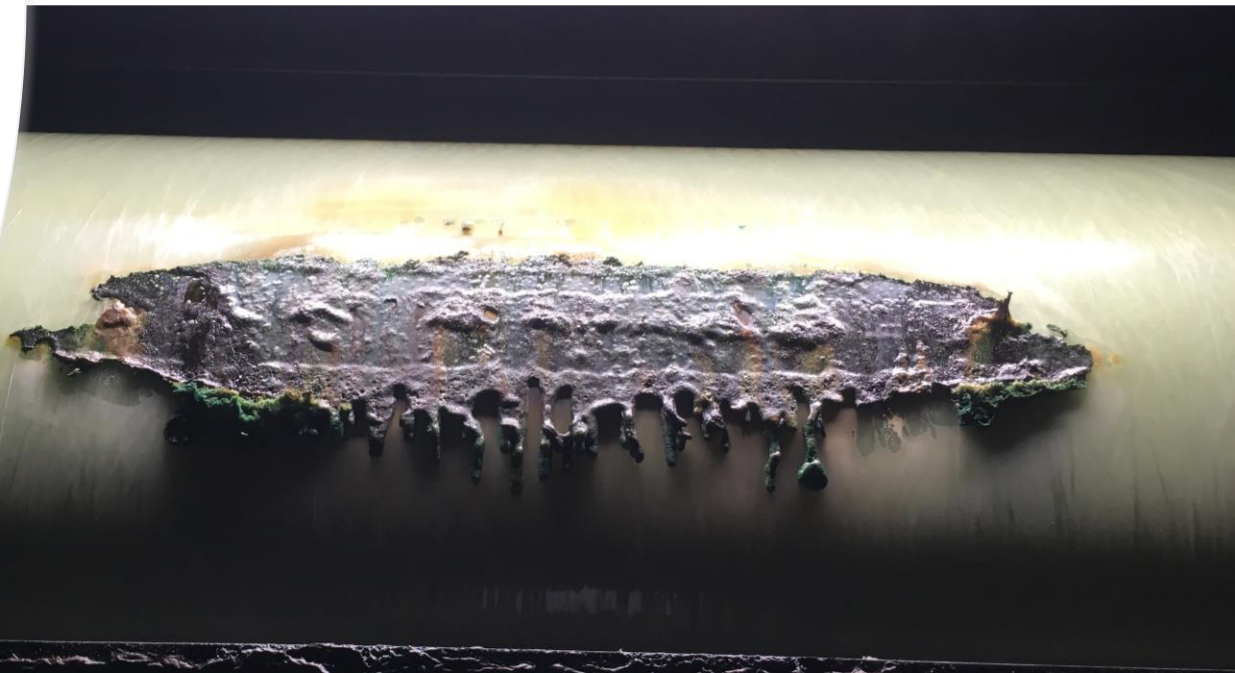
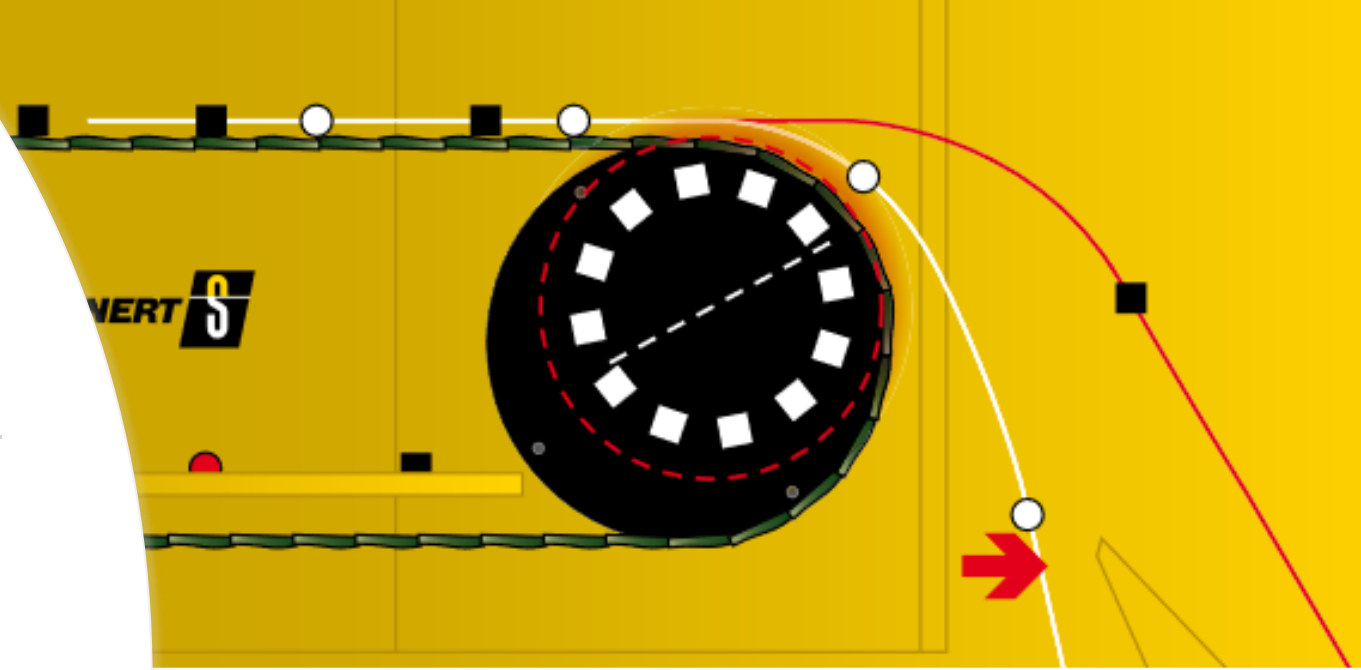
Eddy C Move

Type	Pole system	particle size	frequency at 2,600 rpm	frequency at 4,000 rpm
EddyC Fines	E 6119-4T	> 0.5 mm	823 Hz	1,267 Hz
NES	E 6119	> 1 mm	823 Hz	-
NES	E 5012	> 4 mm	520 Hz	-
NES	E 5009	> 5 mm	390 Hz	-
NES	E 5005	> 40 mm	217 Hz	-
CanMaster	E 5005	> 50 mm	217 Hz	-



# ECENTRIC POLE SYSTEM

- Allows for adjustable throw of material
- Prevents ferrous material sticking to underside of ECS. A common issue with concentric ECS design found in competition machines.
- First patented by Steinert

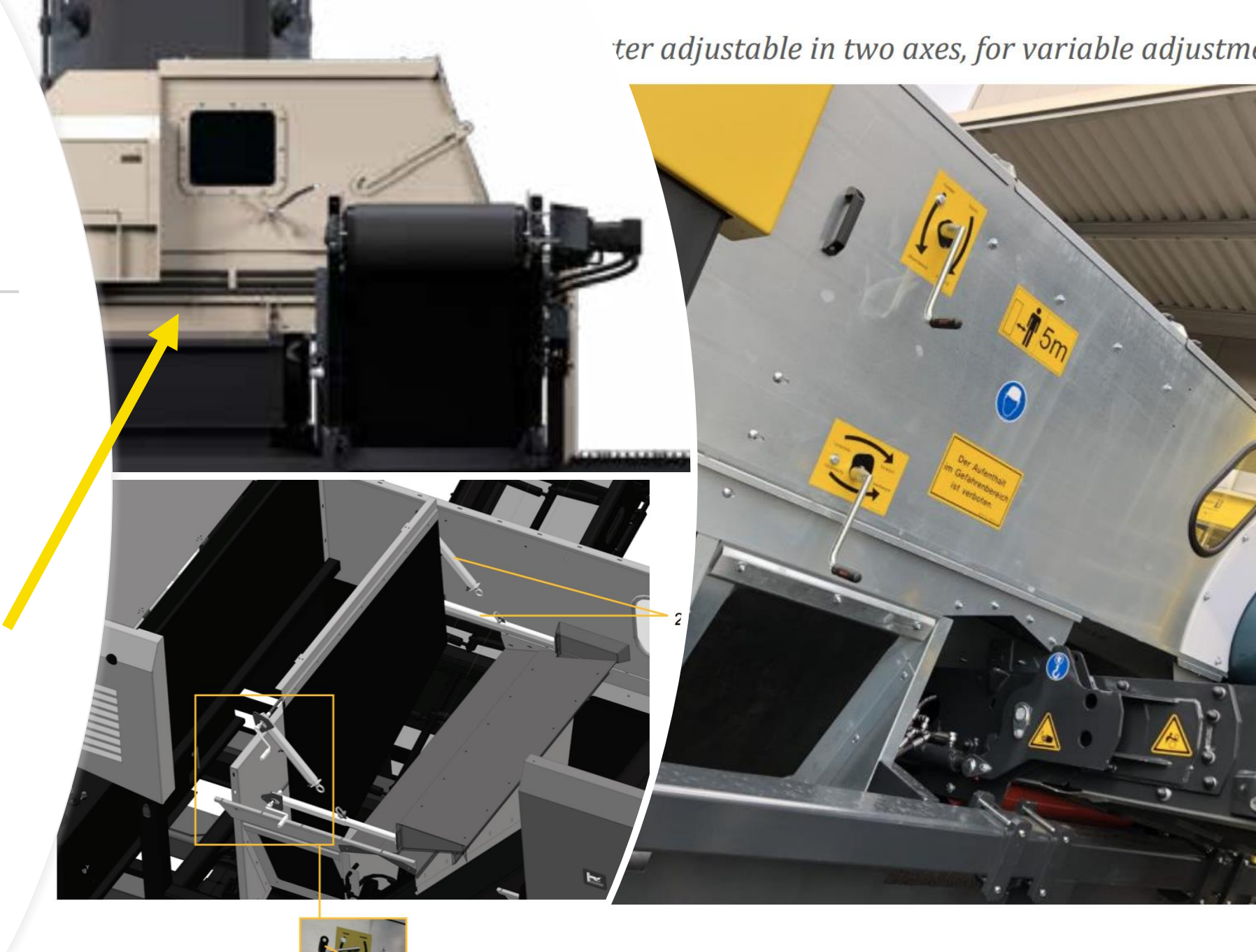




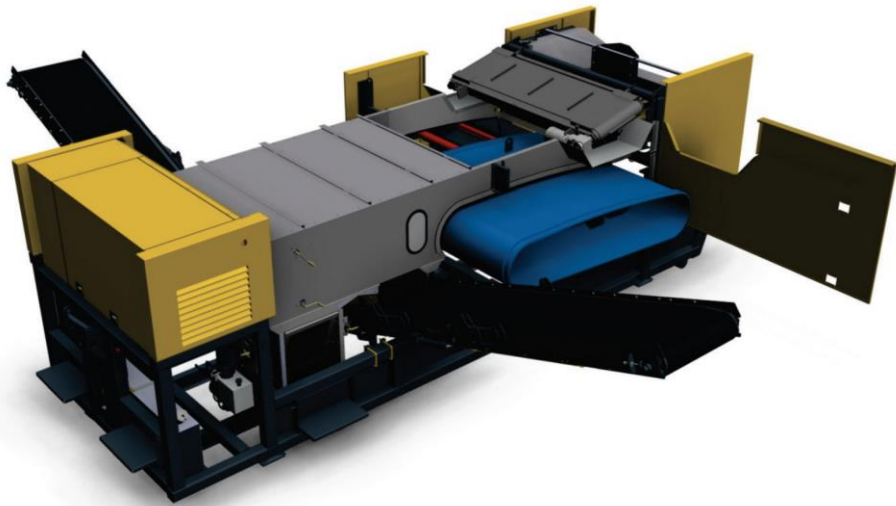
ter adjustable in two axes, for variable adjustm

## 3D SPLITTER

- 3D splitter allows splitter to be move in/out and up/down for precise material split.
- Competition machines use manual adjusted flap. Very difficult to get results. Limits the effectiveness on smaller material



# FEATURES



C Design allows for easy belt change

Stage 5 Cat engine

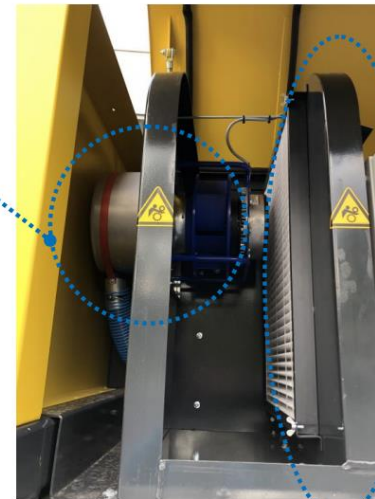


# FEATURES

- Zyklon Air Pre-Filter for dusty environments
- Independent hydraulic legs for levelling. All ECS units must be fully level for best results. Competition tracked machines can be difficult to level.



Hydraulische Stützfüße  
Hydraulic support feet



Zyklonvorfilter  
Zyklon Air-Pre-filter

Vorfilter Generatorraum  
Fine filter for generator housing