

UFKES

Greentec



Greentec

- FORESTCUTTERS
- STUMP GRINDERS
- FOREST MULCHERS



■ About us



■ Ufkes Greentec produce Wood chippers, Stump grinders and Grapple saws for sale to professionals worldwide. All stages of design, production and testing are done in house by the Ufkes Greentec Team. We offer full after sales service through our in house engineers and network of approved dealers worldwide.

■ Having spent years working in the design, sales and servicing of forestry and arboricultural equipment, in 2004 Jippe Ufkes used his extensive experience to start designing and producing his own equipment better able to meet the demands and requirements of professional users. A new factory was opened in Drachten in the North of the Netherland. Since then the product range has expanded to include woodchippers in a wide variety of configurations, PTO, Trailer – with or without bin, engine powered, track and truck mounted as well as stump grinders, grapple saws and forestry mulchers. Additional facilities have been added over the years, a new dedicated production facility of 4400 m² and a separate after sales and service department.



■ Modern production factory

Our machines are entirely designed and produced in our state-of-the-art factory located in Drachten, the Netherlands.

■ Sales and Service - the Netherlands

Displaying the extensive range of machinery available, while also providing product servicing and maintenance.

■ Sales and Service - Germany

In 2019 Ufkes Greentec opened a new Sales & Service facility in Sudern, Germany, providing convenient access to customers in this area.

■ Service

Providing onsite service, maintenance and repairs, by our highly skilled team of professionals.

■ Parts

Because we produce our machines in house, we have all parts readily available.

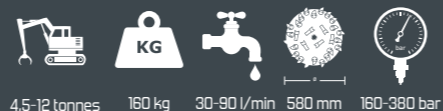
■ The Greentec team

Our passionate and enthusiastic team is our greatest asset, providing a friendly, competent and complete customer service experience.

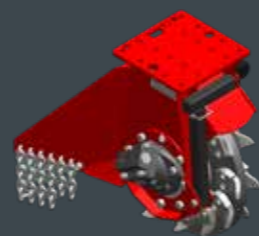
HYDRAULIC STUMP GRINDERS



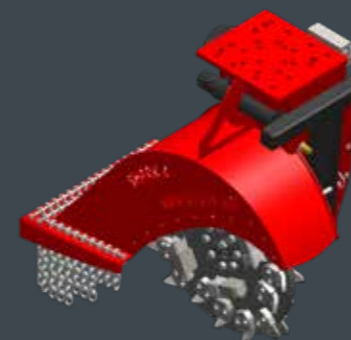
Greentec SHARK stump grinders, the perfect solution for every excavator/ tool carrier



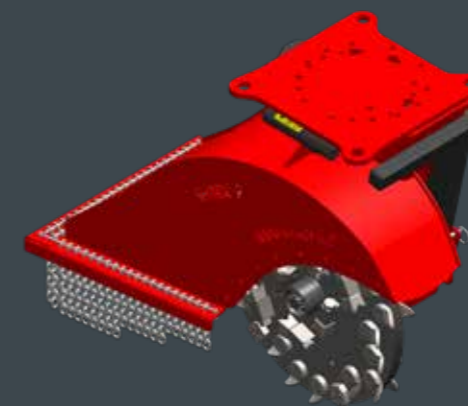
SHARK 4



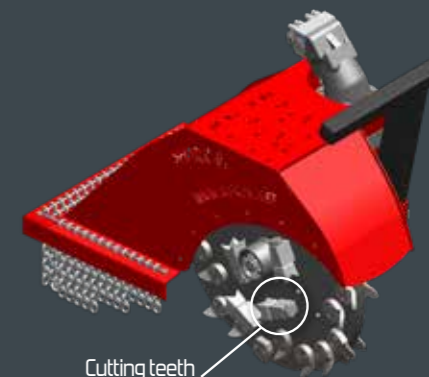
SHARK 6



SHARK 8



SHARK 8 Compact

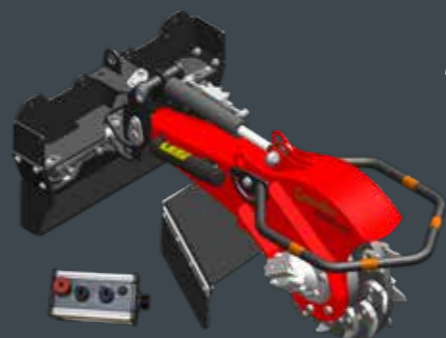


Cutting teeth on side of grinding wheel

	4-50	4-95	6-65	6-100	6-130	8-140	8-220V	8C-140
Flow rate l/min	30-50	60-90	50-65	75-100	100-130	110-160	80-235	110-160
Excavator weight (tonnes)	4,5-7,5	6-12	5,5-7,5	7-9	10-14	13-18	15-28	13-18
Grinding wheel diameter (mm)	580	580	660	660	660	870	870	870
Grinding wheel thickness (mm)	105 (25)	105 (25)	105 (25)	105 (25)	105 (25)	120 (40)	120 (40)	120 (40)
Teeth	2 x 12	2 x 12	2 x 16	2 x 16	2 x 16	2 x 22	2 x 22	2 x 22
Weight (kg)	160	160	320	320	320	700	740	595
Operating pressure (bar)	160-380	160-380	160-380	160-380	160-380	200-380	200-420	200-380
Optimum disc speed (rpm)	1550	1550	1450	1450	1450	1150	1150	1000
Hydraulic swivelhead 270°			option	option	option	option	option	option
Cutting teeth on side of grinding wheel			option 4x	option 4x	option 4x	option 6x	option 6x	option 6x



SHARK 4W	4-50	4-95
Weight (kg)	260	260
Swivelling range (cm)	160	160
Above ground (cm)	55	55
Below ground (cm)	57	57
Below ground without dozer blade (cm)	90	90



- Two swivelling cylinders ensure optimum grinding in both directions
- Extra deep grinding, compact during transport, thanks to hydraulic lifting cylinder
- Dozer for additional stability during grinding, can also be used for levelling, easily removed for extra-deep grinding

SHARK 6 & 8

- Low maintenance drive line, main shaft in oil bath
- Easy to move, folding support leg, sling points for hoisting or tying
- Long-life hydraulic motor, claw coupling between gearbox and hydraulic motor
- Secure and safe routing of hoses protects them from damage
- Spacious housing and double row heavy chains minimise flying debris
- Heavy duty frame can be used for raking debris

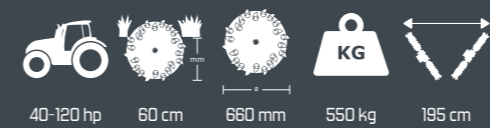


All-round shielding to minimise flying debris

3-POINT LINKAGE STUMP GRINDERS



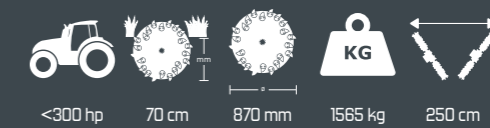
Greentec PIRANHA grinders, high capacity stump grinders for the largest stumps



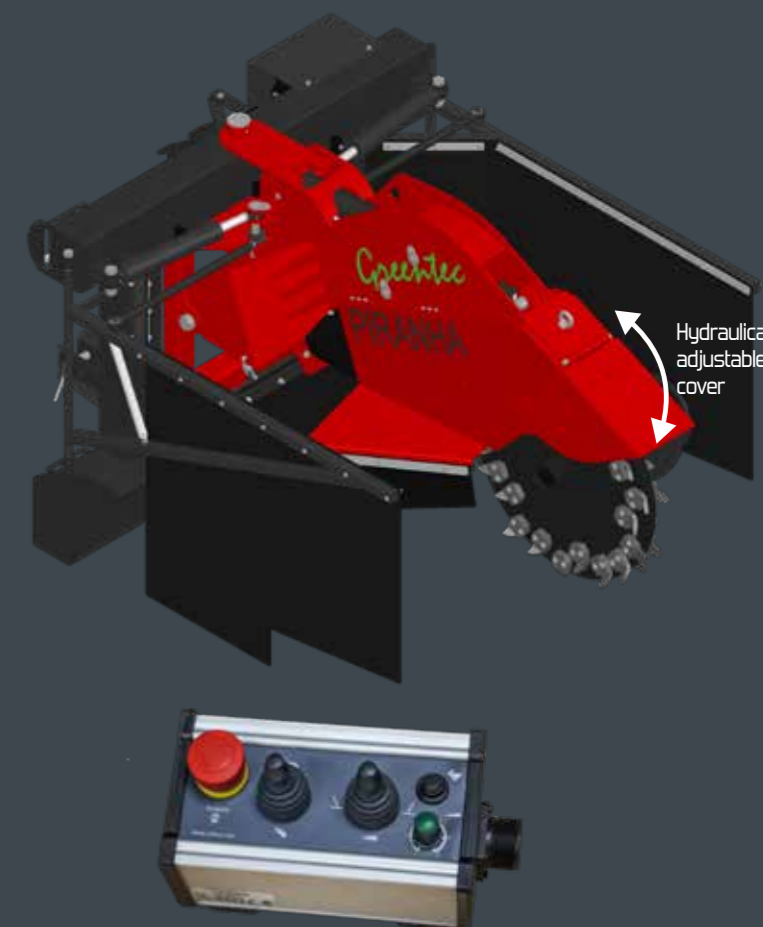
Greentec 660 stump grinder



Standard electric joystick-control including 4 metre cable



Greentec PIRANHA stump grinder



Standard electric joystick-control with variable speedcontrol including 4 metre cable

Greentec 3-point linkage grinders:

- Mechanical drive
- Large swivelling range, minimum wear, drive runs through the heart of the machine
- Safely operated from the tractor by electric remote control
- Deep grinding, thanks to our large grinding wheels with compact drive unit
- Low maintenance drive line, main shaft in oil bath
- Tractor and machine protected against overload, drive is equipped with pawl clutch, 100 % power transmission, or completely free, no slippage, minimal wear
- Grinding wheel driven from one side only, allows easy removal of winding calamity



Drive line runs fully protected through heart of machine



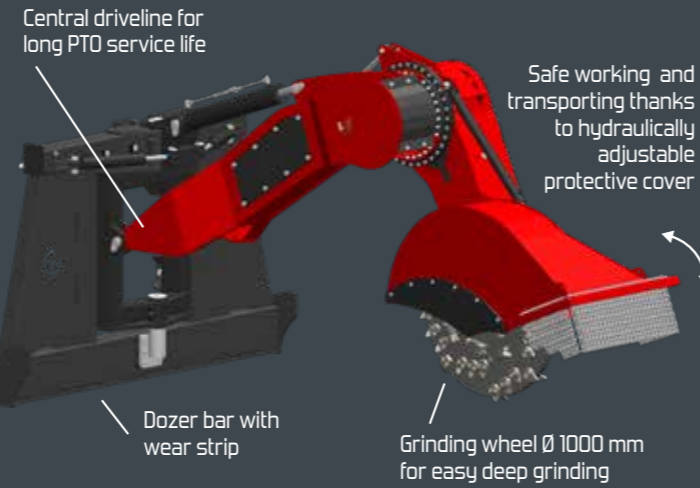
All-round shielding: minimises flying debris

	Greentec 660	Greentec Piranha	Greentec Piranha HP
Grinding wheel diameter (mm)	660	870	870
Grinding wheel thickness (mm)	105 (25)	120 (40)	120 (40)
Teeth	2 x 16	2 x 22	2 x 22
Weight (kg)	550	1565	1565
L x W x H (cm)	200 x 120 x 120	230 x 175 x 150	230 x 175 x 150
Swivelling range (cm)	195	250	250
Telescopic (cm)	50	40	40
Above ground (cm)	55	50	50
Below ground (cm)	60	70	70
Tractors (hp)	40 - 120	≤ 200	≤ 300
3-point linkage cat.	1-2	2-3	2-3

PIRANHA 10



Greentec PIRANHA 10 stump grinder



Optional with 8 cutting teeth, to grind away bushes

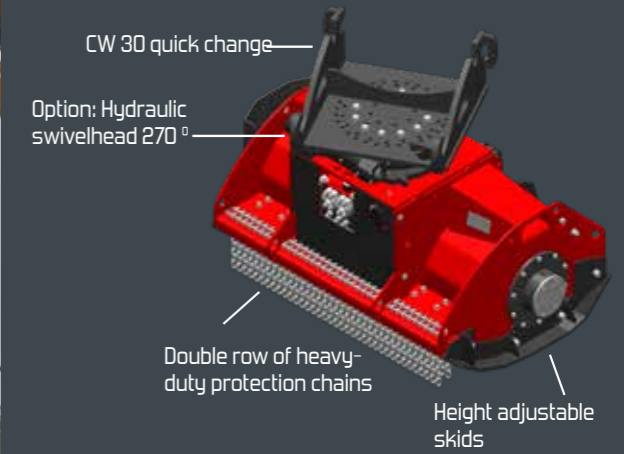
- Robust construction
- 100% mechanically driven = highest efficiency
- Large reach thanks to arm construction
- Safe working thanks to hydraulically adjustable protective cover that minimises scattering
- Easy deep grinding up to 145 cm
- Holes easily closed with heavy-duty dozer bar
- Direct, stable drive line through PTO to protect the tractor and the machine
- Not only points, but also shaft of the teeth have width
- LS implemented

	Greentec Piranha 10
Power requirements (HP)	150-400
Grinding wheel diameter (mm)	1000
Grinding wheel thickness (mm)	120 (40)
Teeth	2 x 28
Weight (kg)	2450
L x W x H (cm)	290 x 238 x 267
Swivelling range (cm)	350
Length first arm (cm)	200
Length second arm (cm)	130
Max. grinding distance from swivelling point (cm)	400
Above ground (cm)	180
Below ground (cm)	145

FOREST MULCHER



Greentec FOREST MULCHER 1300/1500



Adjustable Hardox anvils (rotatable)

- Most compact low weight machine on the market built almost entirely with hardox steel
- Highest capacity, mobile or tracked excavator can always be adjusted to the highest oil flow, made possible by Ufkes Speedcontrol system
- Easily adjustable and re-usable anvils ensure optimum quality mulched material
- Maintenance-free drive, hydraulic motor is integrated in the rotor, eliminating the need for v-belts, which wear out quickly in dusty environments
- Safe to work with, front cover can be opened hydr. for optimum operation and minimum scattering of the material, rear side a double row heavy chains minimise flying debris

	1300	1500
Excavator weight (tonnes)	12-25	12-25
Rotor diameter (mm)	470	470
Teeth	30+2	38+2
Working width (mm)	1250	1500
Machine width (mm)	1570	1820
Weight (kg)	885	985
Operating pressure (bar)	200-380	200-380
Oil flow open system (litre)	130 - 200	130 - 200
Oil flow closed system (litre)	130	130
Voltage	12/24V	12/24V

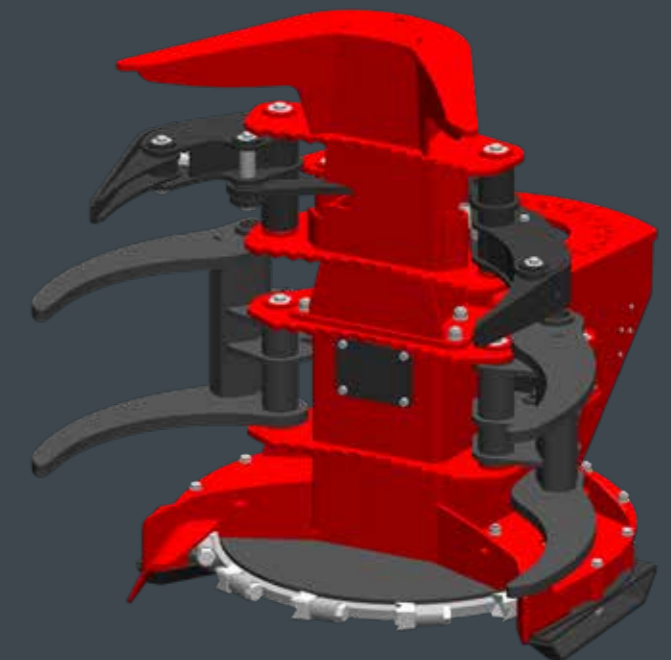
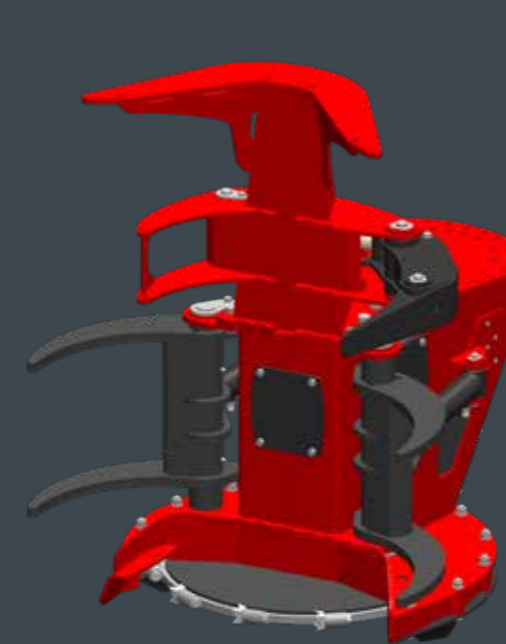


FORESTCUTTER



Greentec FORESTCUTTER 300

Greentec FORESTCUTTER 370



	300-65	300-100	300-130	370
Excavator weight (tonnes)	7,5-9	8-14	13-16	13-25
Capacity (Ø mm)	50-300	50-300	50-300	50-370
Grapple opening (mm)	1070	1070	1070	1160
Cutting wheel diameter (mm)	855	855	855	1050
Teeth thickness (mm)	42	42	42	42
Optimum disc speed (Closed system)(rpm)	1400	1400	1400	1300
Optimum disc speed (open system)(rpm)	1650	1650	1650	1500
Thickness wheel (mm)				42 or 58
Weight (kg)	620	620	630	1003
Weight (kg) with collector arms	745	745	755	1191

- Fastest machine on the market, can also be used as a sorting grapple ¹
- One machine, three functions, clearing bushes and trees, and maintaining wooded areas
- The fine cut allows trees to regrow again optimally
- More view of your work, and higher capacity, with the optional swivelhead, material can be cut while slewing the excavator
- Trees are cut at ground level, reducing the risk of tyre damage



Hydr. rotatable 180° for optimum visibility and maximum capacity

Control

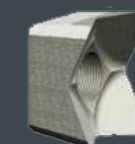


Foot pedal in cab



Push buttons with finger control to be built on to joy-stick of crane

Cutting teeth



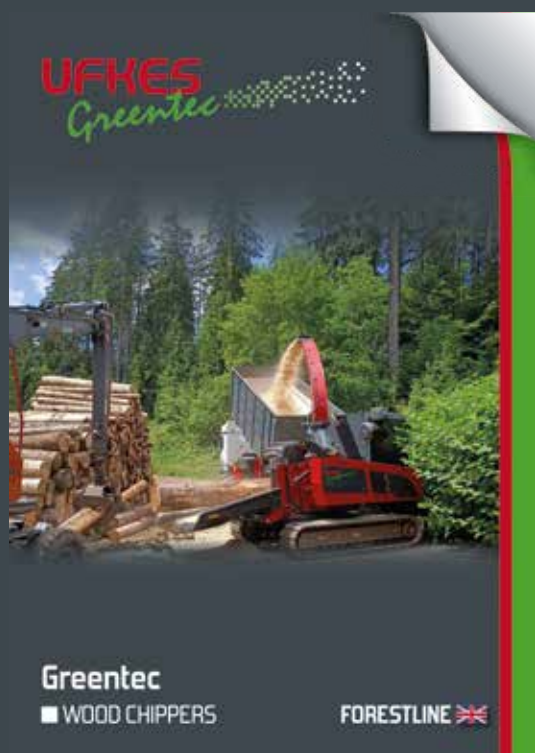
Cutting teeth



Cutting teeth with hard metal



1. Hammer function + 1x double acting + leak hose



■ **Ufkes Greentec**
Kelvinlaan 80
9207 JB Drachten
The Netherlands - Headoffice
+31 (0) 512 - 584 760



WWW.UFKES.NET ■